

Enclosures **PushButton Series**

Polycarbonate Enclosure 4 x 3 x 2 Inches Push Button Series 1 Hole 22 mm with Yellow Lift Off Cover and Black Base



Catalog Number YW-CFPC1PB22

UPC 785928575150

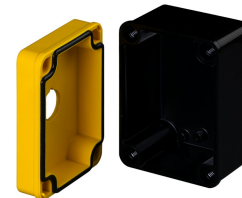
DESCRIPTION

4H x 3W x 2D Inches Push Button Series Yellow Fiberglass Enclosure is an in-line enclosure designed to be a true push button station and houses pushbuttons, switches and pilot lights in 22mm configurations. Designed for general electrical and electronic applications or any application that has associated environmental concerns. Features a black base with a yellow lift off cover.



APPLICATION

- For use in many MRO and OEM applications
- Slim design allows easy installation of pushbuttons and switches in machine control applications with tight or dense space requirements
- Used in compact or portable control systems or for use as an Operator Interface Enclosures in both indoor and outdoor environments
- These unique in-line enclosures house pushbuttons; switches and pilot lights in both 30mm and 22mm configurations
- Used indoors or outdoors
- Yellow cover complies with need for E-STOP applications.



FEATURES

- Memory retaining continuous polyurethane gasket
- Captive polymer cover screws
- Corrosion resistant polycarbonate
- Submersible; non corrosive; environmental design
- High Impact Resistance
- High visibility safety yellow cover

General Information

Color	Yellow
Cover Type	Push Button
Mounting Type	Wall Mount
Material	Polycarbonate
Cover Screw Size	Custom
Cover Screw Recommended Torque	16-20 in-lbs
Cover Screw Material	Polycarbonate
Installation Mounting Torque	25-30 in-lbs Max
Metal Inserts	
Gasket Material	Poured In Place (PIP) Polyurethane Seamless
Country of Origin	USA

DIMENSIONS

Height (in)	4.0
Width (in)	3.0
Depth (in)	2.0
Height (mm)	101.6
Width (mm)	76.2
Depth (mm)	50.8
Usable Depth (in)	2.5
Usable Depth (mm)	64.0

STANDARDS

NEMA 10250; UL 50; UL 50e; UL508A	cULus Listed File #E319779
--------------------------------------	----------------------------

CSA Std. C22.2	cULus Listed File #E319779
----------------	----------------------------

Type	1; 3R; 4; 4X; 6P; 12
------	----------------------

IEC 60529; UL Listed #E362920	IP66; IP68
-------------------------------	------------

Temperature Range °F	-40°F to +248°F
----------------------	-----------------

Temperature Range °C	-40°C to +120°C
----------------------	-----------------

Flammability Rating	UL94-5VA
---------------------	----------

Outdoor Exposure UL746c	(f1) Rated
-------------------------	------------

CE	Certified
----	-----------