

Enclosures **PushButton Series**

## Polycarbonate Enclosure 4 x 3 x 2 Inches Push Button Series 1 Hole 30 mm with Yellow Lift Off Cover and Black Base



**Catalog Number** YW-CFPC1PB

**UPC** 785928575136

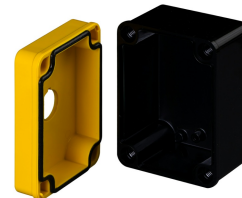
### DESCRIPTION

4H x 3W x 2D Inches Push Button Series Yellow Fiberglass Enclosure is an in-line enclosure designed to be a true push button station and houses pushbuttons, switches and pilot lights in 30mm configurations. Designed for general electrical and electronic applications or any application that has associated environmental concerns. Features a black base with a yellow lift off cover.



### APPLICATION

- For use in many MRO and OEM applications
- Slim design allows easy installation of pushbuttons and switches in machine control applications with tight or dense space requirements
- Used in compact or portable control systems or for use as an Operator Interface Enclosures in both indoor and outdoor environments
- These unique in-line enclosures house pushbuttons; switches and pilot lights in both 30mm and 22mm configurations
- Used indoors or outdoors
- Yellow cover complies with need for E-STOP applications.



## FEATURES

---

- Memory retaining continuous polyurethane gasket
- Captive polymer cover screws
- Corrosion resistant polycarbonate
- Submersible; non corrosive; environmental design
- High Impact Resistance
- High visibility safety yellow cover

## General Information

---

Color	Yellow
Cover Type	Push Button
Mounting Type	Wall Mount
Material	Polycarbonate
Cover Screw Size	Custom
Cover Screw Recommended Torque	16-20 in-lbs
Cover Screw Material	Polycarbonate
Installation Mounting Torque	25-30 in-lbs Max
Metal Inserts	
Gasket Material	Poured In Place (PIP) Polyurethane Seamless
Country of Origin	USA

## DIMENSIONS

---

Height (in)	4.0
Width (in)	3.0
Depth (in)	2.0
Height (mm)	101.6
Width (mm)	76.2
Depth (mm)	50.8
Usable Depth (in)	2.5
Usable Depth (mm)	64.0

## STANDARDS

---

NEMA 10250; UL 50; UL 50e; UL508A	cULus Listed File #E319779
--------------------------------------	----------------------------

CSA Std. C22.2	cULus Listed File #E319779
----------------	----------------------------

Type	1; 3R; 4; 4X; 6P; 12
------	----------------------

IEC 60529; UL Listed #E362920	IP66; IP68
-------------------------------	------------

Temperature Range °F	-40°F to +248°F
----------------------	-----------------

Temperature Range °C	-40°C to +120°C
----------------------	-----------------

Flammability Rating	UL94-5VA
---------------------	----------

Outdoor Exposure UL746c	(f1) Rated
-------------------------	------------

CE	Certified
----	-----------