

Enclosures J Series

Fiberglass Enclosure 12 x 10 x 5 Inches J Series White with Hinged, Opaque Cover, 2 Cover Screws



**Catalog
Number**

WH-J1210HW

UPC

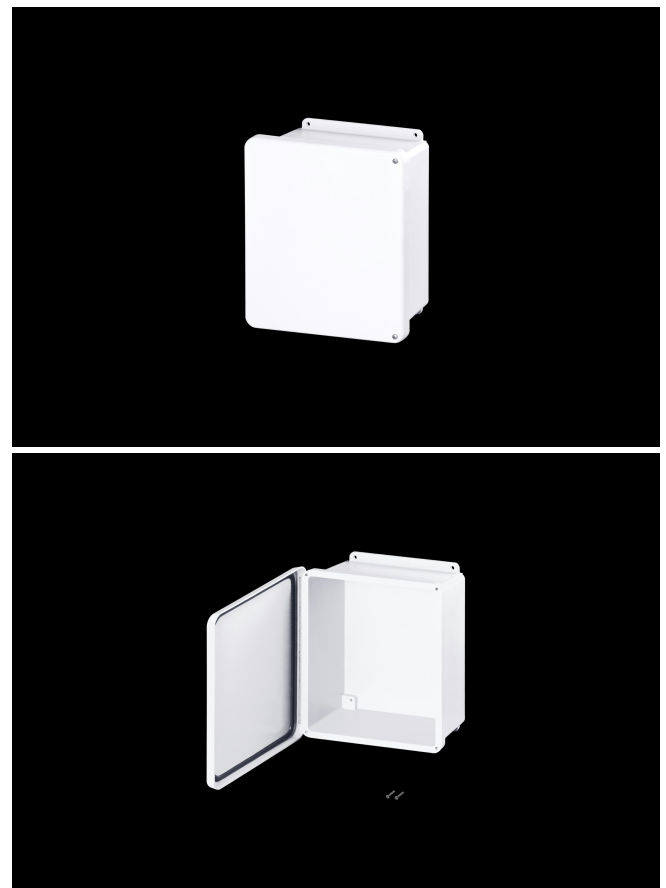
785928904196

DESCRIPTION

12H x 10W x 5D Inches J Series White Fiberglass Enclosure with an "HW" Raised Opaque Cover (Hinged, 2 Cover Screws) is designed for general electrical and electronic applications. Simple in its design, the enclosure can be configured with modifications such as cutouts and windows. Featuring a modest overhand cover on a flange mounted base, they offer unobstructed side-walls, built in mounting capabilities and a protective wrap around cover. J Series Products enhance any instrument installation.

APPLICATION

- Industrial enclosure for harsh; aggressive environments
- Designed for general electrical and electronic applications; and any application that has associated environmental concerns
- Can be configured with cutouts; windows; and modifications that make the finished product truly unique
- Enhance any instrument installation and accommodate



standard back-panel mounting

FEATURES

- White Color
- Increased wall thickness vs. competitive models offers structural support and prevents potential water ingress
- Integral mounting flange vs. mounting feet (no assembly required)
- Molded-in inserts provide added pull-out strength
- White Opaque Cover
- Overhang cover on smooth sided base
- High temperature; flame retardant; non-corrosive
- All stainless hardware latches and screws
- Full-length; stainless-steel hinge
- Chemically resistant; fiberglass reinforced polyester
- Non-corrosive; environmental designs
- Stainless steel retention chain on screw covers
- Continuous polyurethane gasket
- Manufactured with SolarGuard®, Stahlin's proprietary formulation of non-halogenated fiberglass, offering superior resistance to outdoor exposure, chemicals and flames.
- Back Panels Available for all sizes

General Information

Color	White
Cover Type	Opaque
Mounting Type	Wall Mount
Material	Fiberglass
Back Panel Screw Size	#10-32 x 3/8
Back Panel Recommended Torque	16-20 in-lbs
Back Panel Screw Material	304 SS
Cover Screw Size	#10-24 x 5/8
Cover Screw Recommended Torque	20-24 in-lbs
Cover Screw Material	304 SS
Installation Mounting Torque	45 in-lbs Max
Metal Inserts	Brass
Hinge Material	304 SS
Gasket Material	Poured In Place (PIP) Polyurethane Seamless
Country of Origin	USA

DIMENSIONS

Height (in)	13.6
Width (in)	11.4
Depth (in)	5.2
Height (mm)	344.4
Width (mm)	290.3
Depth (mm)	132.6
Usable Depth (in)	4.5
Usable Depth (mm)	114.0

STANDARDS

NEMA 10250; UL 50; UL 50e; cULus Listed File
UL508A #E64358

CSA Std. C22.2 cULus Listed File
#E64358

Type 1; 3R; 4; 4X; 6P; 12

IEC 60529; UL Listed IP66
#E362920

UL1741 UL Listed File #E333478

Plenum Space UL2043 Compliant

Temperature Range °F -76°F to +274°F

Temperature Range °C -60°C to +134°C

Flammability Rating UL94-5VA

NFPA No. 101 Flame Spread Class A(1)

Outdoor Exposure UL746c (f1) Rated

CE Certified