

Enclosures PolySlim Series

## Polycarbonate Low Profile Enclosure 16 x 14 x 4 Inches PolySlim™ Series with Clear Cover



Catalog Number PC161404CC

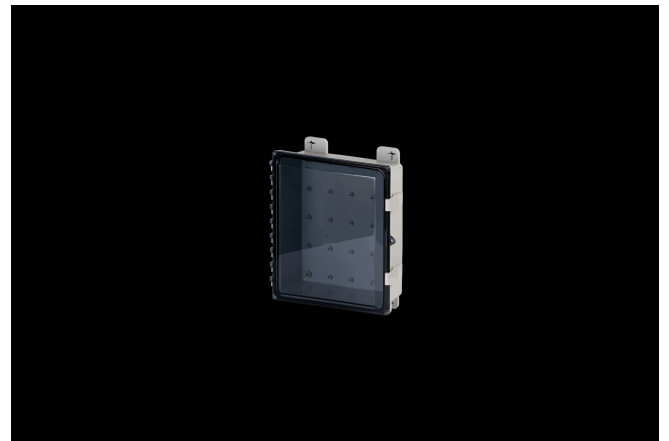
UPC 785928581366

### DESCRIPTION

16H X 14W X 4D Inches PolySlim™ Series polycarbonate enclosure is a high performance, shallow depth, polycarbonate enclosure applicable for heavy industrial conditions, but with a refined style suitable for commercial, industrial and OEM design applications. PolyStar Series enclosures are rain-tight and watertight rated for use in both interior and exterior applications. This "HPL" configuration features a clear cover that is hinged, latched and padlockable.

### APPLICATION

- For use in applications requiring shallow depth, low-profile enclosures
- Ideal for housing wireless access points, remote monitoring, and low-profile electrical control applications.
- Suitable for heavy industrial; commercial; and OEM applications
- Used to house electrical and electronic controls; instruments; and components
- Used indoors or outdoors
- Used in highly corrosive areas
- Provides protection against rain; sleet; snow; splashing water; hose-directed water; submersion; sun/UV and flame protection.



## FEATURES

---

- Low-profile design provides the perfect depth for smaller components while maintaining a large footprint to accommodate interior mounted antennae
- Full Non-metallic material construction with optional ABS Back Panel to allow unimpeded transmission of wireless signals
- Hinges do not penetrate enclosure
- Easy to remove cover
- High performance inserts
- Integrated padlock hasp
- Smooth Side Wall construction for easy fitting mounting and alignment
- Molded in bosses for attachment of DIN rail
- Molded-in Mounting Feet / Flange Provided
- Single SKU with multiple cover attachment options
- Back Panels Available for all sizes

## General Information

|  |  |
|--|--|
| Color                                    | Gray   |
| Cover Type                               | Clear  |
| Mounting Type                            | Wall Mount                                     |
| Material                                 | Polycarbonate                                  |
| Back Panel Screw Size                    | #10-32 x 3/8                                   |
| Back Panel Recommended Torque            | 16-20 in-lbs                                   |
| Back Panel Screw Material                | Zinc Plated                                    |
| Cover Screw Size                         | #10-32 x 5/8                                   |
| Cover Screw Recommended Torque           | 20-24 in-lbs                                   |
| Cover Screw Material                     | 304 SS   |
| Mounting Flange Screw Size               | 1/4-20 x 1/2                                   |
| Mounting Flange Screw Recommended Torque | 10-14 in-lbs                                   |
| Installation Mounting Torque             | 25-30 in-lbs Max                               |
| Metal Inserts                            | Brass  |
| Hinge Material                           | Integral Polycarbonate                         |
| Latch Material                           | Polycarbonate                                  |
| Gasket Material                          | Poured In Place (PIP)<br>Polyurethane Seamless |
| Country of Origin                        | USA  |

## DIMENSIONS

|                   |       |
|-------------------|-------|
| Height (in)       | 16.0  |
| Width (in)        | 14.0  |
| Depth (in)        | 4.0   |
| Height (mm)       | 406.4 |
| Width (mm)        | 355.6 |
| Depth (mm)        | 101.6 |
| Usable Depth (in) | 5.1   |
| Usable Depth (mm) | 128.8 |

## STANDARDS

---

|                                      |                            |
|--------------------------------------|----------------------------|
| NEMA 10250; UL 50; UL 50e;<br>UL508A | cULus Listed File #E319779 |
|--------------------------------------|----------------------------|

|                |                            |
|----------------|----------------------------|
| CSA Std. C22.2 | cULus Listed File #E319779 |
|----------------|----------------------------|

|      |                      |
|------|----------------------|
| Type | 1; 3R; 4; 4X; 6P; 12 |
|------|----------------------|

|                               |            |
|-------------------------------|------------|
| IEC 60529; UL Listed #E362920 | IP66; IP68 |
|-------------------------------|------------|

|                      |                 |
|----------------------|-----------------|
| Temperature Range °F | -40°F to +248°F |
|----------------------|-----------------|

|                      |                 |
|----------------------|-----------------|
| Temperature Range °C | -40°C to +120°C |
|----------------------|-----------------|

|                     |          |
|---------------------|----------|
| Flammability Rating | UL94-5VA |
|---------------------|----------|

|                         |            |
|-------------------------|------------|
| Outdoor Exposure UL746c | (f1) Rated |
|-------------------------|------------|

|    |           |
|----|-----------|
| CE | Certified |
|----|-----------|