

Enclosures RJ Series

## Fiberglass Enclosure 16 x 14 x 8 Inches J Series Raised Cover with Hinged, Opaque Cover, 2 Cover Screws



**Catalog  
Number**

RJ1614HW

**UPC**

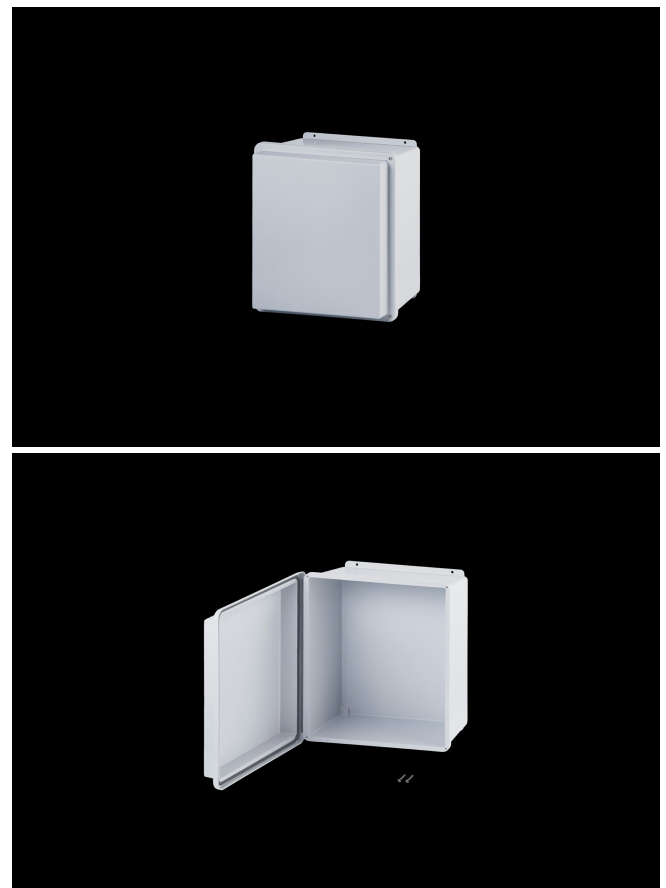
785928336553

### DESCRIPTION

16H x 14W x 8D Inches J Series Fiberglass Enclosure with an "HW" Raised Opaque Cover (Hinged, 2 Cover Screws) is designed for general electrical and electronic applications. Simple in its design, the enclosure can be configured with modifications such as cutouts and windows. Featuring a modest overhand cover on a flange mounted base, they offer unobstructed side-walls, built in mounting capabilities and a protective wrap around cover. J Series Products enhance any instrument installation.

### APPLICATION

- Industrial enclosure for harsh; aggressive environments
- Designed for general electrical and electronic applications; and any application that has associated environmental concerns
- Can be configured with cutouts; windows; and modifications that make the finished product truly unique
- Enhance any instrument installation and accommodate



standard back-panel mounting

## FEATURES

---

- Offers a "raised cover" that increases depth by adding to the depth of the cover.
- Increased wall thickness vs. competitive models offers structural support and prevents potential water ingress
- Integral mounting flange vs. mounting feet (no assembly required)
- Molded-in inserts provide added pull-out strength
- Raised Opaque Cover
- Overhang cover on smooth sided base
- High temperature; flame retardant; non-corrosive
- All stainless hardware latches and screws
- Full-length; stainless-steel hinge
- Chemically resistant; fiberglass reinforced polyester
- Non-corrosive; environmental designs
- Stainless steel retention chain on screw covers
- Continuous polyurethane gasket
- Manufactured with SolarGuard®, Stahlin's proprietary formulation of non-halogenated fiberglass, offering superior resistance to outdoor exposure, chemicals and flames.
- Back Panels Available for all sizes

## General Information

---

Color	Gray
Cover Type	Opaque
Mounting Type	Wall Mount
Material	Fiberglass
Back Panel Screw Size	#10-32 x 3/8
Back Panel Recommended Torque	16-20 in-lbs
Back Panel Screw Material	304 SS
Cover Screw Size	#10-24 x 5/8
Cover Screw Recommended Torque	20-24 in-lbs
Cover Screw Material	304 SS
Installation Mounting Torque	45 in-lbs Max
Metal Inserts	Brass
Hinge Material	304 SS
Gasket Material	Poured In Place (PIP) Polyurethane Seamless
Country of Origin	USA

## DIMENSIONS

---

Height (in)	17.5
Width (in)	15.4
Depth (in)	7.7
Height (mm)	445.3
Width (mm)	391.9
Depth (mm)	195.1
Usable Depth (in)	6.9
Usable Depth (mm)	174.0

## STANDARDS

---

NEMA 10250; UL 50; UL 50e; cULus Listed File  
UL508A #E64358

CSA Std. C22.2 cULus Listed File  
#E64358

Type 1; 3R; 4; 4X; 6P; 12

IEC 60529; UL Listed IP66  
#E362920

UL1741 UL Listed File #E333478

Plenum Space UL2043 Compliant

Temperature Range °F -76°F to +274°F

Temperature Range °C -60°C to +134°C

Flammability Rating UL94-5VA

NFPA No. 101 Flame Spread Class A(1)

Outdoor Exposure UL746c (f1) Rated

CE Certified