

Enclosures **RJ Series**

Fiberglass Enclosure 18 x 16 x 10 Inches J Series Raised Cover with Hinged, Opaque Cover, 2 Cover Screws



Catalog Number

RJ1816HW

UPC

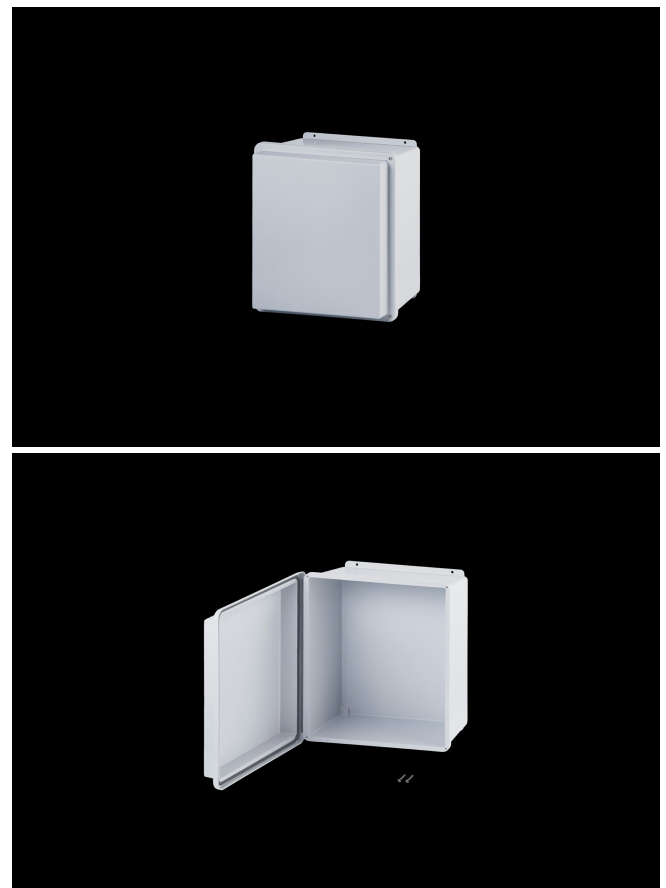
785928005855

DESCRIPTION

18H x 16W x 10D Inches J Series Fiberglass Enclosure with an "HW" Raised Opaque Cover (Hinged, 2 Cover Screws) is designed for general electrical and electronic applications. Simple in its design, the enclosure can be configured with modifications such as cutouts and windows. Featuring a modest overhand cover on a flange mounted base, they offer unobstructed side-walls, built in mounting capabilities and a protective wrap around cover. J Series Products enhance any instrument installation.

APPLICATION

- Industrial enclosure for harsh; aggressive environments
- Designed for general electrical and electronic applications; and any application that has associated environmental concerns
- Can be configured with cutouts; windows; and modifications that make the finished product truly unique
- Enhance any instrument installation and accommodate



standard back-panel mounting

FEATURES

- Offers a "raised cover" that increases depth by adding to the depth of the cover.
- Increased wall thickness vs. competitive models offers structural support and prevents potential water ingress
- Integral mounting flange vs. mounting feet (no assembly required)
- Molded-in inserts provide added pull-out strength
- Raised Opaque Cover
- Overhang cover on smooth sided base
- High temperature; flame retardant; non-corrosive
- All stainless hardware latches and screws
- Full-length; stainless-steel hinge
- Chemically resistant; fiberglass reinforced polyester
- Non-corrosive; environmental designs
- Stainless steel retention chain on screw covers
- Continuous polyurethane gasket
- Manufactured with SolarGuard®, Stahlin's proprietary formulation of non-halogenated fiberglass, offering superior resistance to outdoor exposure, chemicals and flames.
- Back Panels Available for all sizes

General Information

| | |
|--------------------------------|--|
| Color | Gray |
| Cover Type | Opaque |
| Mounting Type | Wall Mount |
| Material | Fiberglass |
| Back Panel Screw Size | #10-32 x 3/8 |
| Back Panel Recommended Torque | 16-20 in-lbs |
| Back Panel Screw Material | 304 SS |
| Cover Screw Size | #10-24 x 5/8 |
| Cover Screw Recommended Torque | 20-24 in-lbs |
| Cover Screw Material | 304 SS |
| Installation Mounting Torque | 45 in-lbs Max |
| Metal Inserts | Brass |
| Hinge Material | 304 SS |
| Gasket Material | Poured In Place (PIP) Polyurethane Seamless |
| Country of Origin | USA |

DIMENSIONS

| | |
|-------------------|-------|
| Height (in) | 19.6 |
| Width (in) | 17.6 |
| Depth (in) | 10.6 |
| Height (mm) | 498.6 |
| Width (mm) | 447.8 |
| Depth (mm) | 270.0 |
| Usable Depth (in) | 9.9 |
| Usable Depth (mm) | 250.0 |

STANDARDS

NEMA 10250; UL 50; UL 50e; cULus Listed File
UL508A #E64358

CSA Std. C22.2 cULus Listed File
#E64358

Type 1; 3R; 4; 4X; 6P; 12

IEC 60529; UL Listed IP66
#E362920

UL1741 UL Listed File #E333478

Plenum Space UL2043 Compliant

Temperature Range °F -76°F to +274°F

Temperature Range °C -60°C to +134°C

Flammability Rating UL94-5VA

NFPA No. 101 Flame Spread Class A(1)

Outdoor Exposure UL746c (f1) Rated

CE Certified