

Enclosures **Classic Series**

Fiberglass Enclosure 7 x 7 x 5 Inches Classic Series with Window and Hinged, Padlockable Latch Cover



Catalog Number

CLW707HPL

UPC

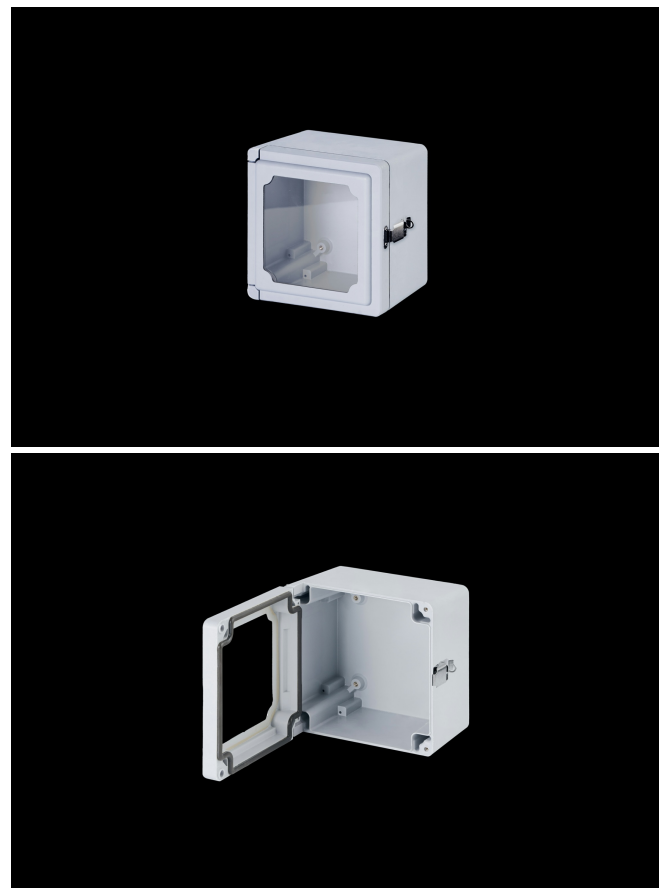
785928008603

DESCRIPTION

7H x 7W x 5D Inches Fiberglass Enclosure with a "HPL" Flush Bonded Window Cover (Hinged, Padlock Latch) are designed for general electrical and electronic applications as well as applications requiring broader environmental concerns. They feature excellent chemical resistance and watertight capabilities and suited for high visibility locations in commercial and industrial applications.

APPLICATION

- Designed for general electrical and electronic applications as well as applications requiring broader environmental concerns
- With smooth edges and pleasing aesthetics they are suited for high visibility locations in industrial and commercial applications
- Chemical resistance and watertight; great for harsh environments.
- Used indoors or outdoors



FEATURES

- Flush Bonded Window
- Stands up to an exceptionally broad range of chemicals
- High impact resistance
- Double insulated material no incidental electrical contact
- Hidden hinge design
- UV Resistant
- Soft edge design; smooth lines; flush cover
- Super abrasion resistant acrylic window
- High temperature; flame retardant; non corrosive; environmental designs
- Manufactured with SolarGuard®, Stahlin's proprietary formulation of non-halogenated fiberglass, offering superior resistance to outdoor exposure, chemicals and flames.
- Back Panels Available for all sizes

General Information

| | |
|--|--|
| Color | Gray |
| Cover Type | Window |
| Mounting Type | Wall Mount |
| Material | Fiberglass |
| Back Panel Screw Size | #10-32 x 3/8 |
| Back Panel Recommended Torque | 16-20 in-lbs |
| Back Panel Screw Material | 304 SS |
| Mounting Foot Screw Size | 5/16-18 x 1/2 |
| Mounting Foot Screw Recommended Torque | 10-14 in-lbs |
| Installation Mounting Torque | 45 in-lbs Max |
| Metal Inserts | Brass |
| Hinge Material | 304 SS |
| Latch Material | 304 SS |
| Gasket Material | Poured In Place (PIP) Polyurethane Seamless |
| Country of Origin | USA |

DIMENSIONS

| | |
|-------------------|-------|
| Height (in) | 7.0 |
| Width (in) | 7.0 |
| Depth (in) | 5.0 |
| Height (mm) | 177.8 |
| Width (mm) | 177.8 |
| Depth (mm) | 127.0 |
| Usable Depth (in) | 4.4 |
| Usable Depth (mm) | 110.0 |

STANDARDS

| | |
|-----------------------------------|---------------------------|
| NEMA 10250; UL 50; UL 50e; UL508A | cULus Listed File #E64358 |
| CSA Std. C22.2 | cULus Listed File #E64358 |
| Type | 1; 3; 3R; 3S; 4; 4X; 12 |
| UL1741 | UL Listed File #E333478 |
| Temperature Range °F | -76°F to +274°F |
| Temperature Range °C | -60°C to +134°C |
| Window Temperature Range °F | -26°F to +170°F |
| Window Temperature Range °C | -32°C to +76°C |
| Flammability Rating | UL94-5VA |
| NFPA No. 101 Flame Spread | Class A(1) |
| Outdoor Exposure UL746c | (f1) Rated |
| CE | Certified |