

Enclosures **Diamond Shield Series**

Fiberglass Enclosure 16 x 14 x 8 Inches Diamond Shield Series with Window and Hinged, 2 Lockable Pull Latches Opaque Cover



**Catalog
Number**

DSW161408HPL

UPC

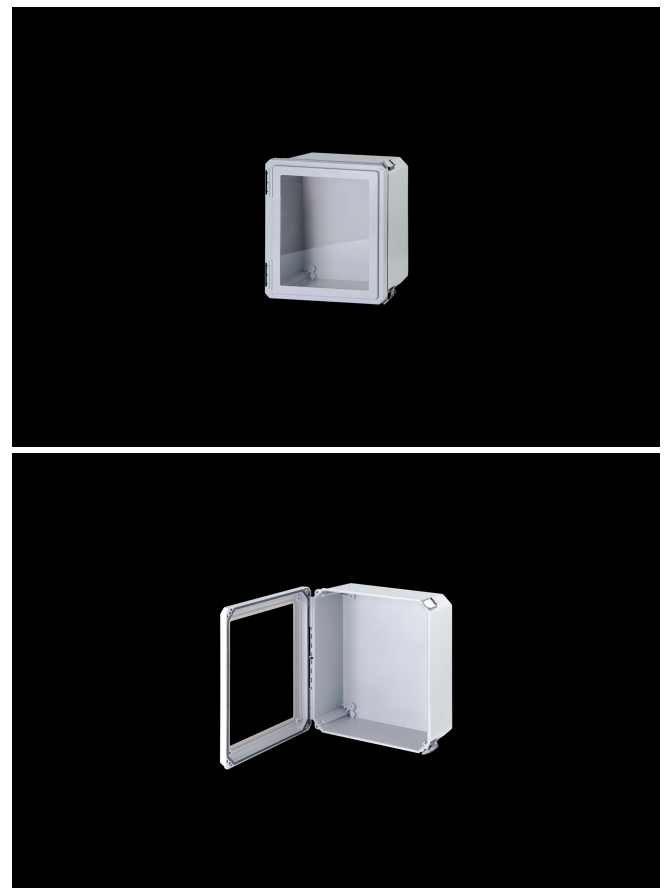
785928908514

DESCRIPTION

16H x 14W x 8D Inches Diamond Shield Series Fiberglass Enclosure with an "HPL" Flush Bonded Window Cover (Hinged, 2 Lockable Pull Latches) is designed for high-end electronics, harsh corrosive environments and industrial applications both indoors and outdoors. The series offers an additional feature of panel mounting in the cover for use as an operator interface in industrial equipment control stations where required.

APPLICATION

- Suited for high-end and harsh industrial applications
- Used indoors or outdoors
- Innovative internal panel management capabilities
- Used in highly corrosive areas
- Panel mounting in the cover for use as an Operator Interface Enclosures in industrial equipment control stations



FEATURES

- Flush Bonded Acrylic Window
- Maximum visibility to raised panels and control boxes
- High temperature; flame retardant; non corrosive; environmental designs
- Results in an environmentally sealed; environmentally sound space
- High impact resistance
- Double insulated material no incidental electrical contact
- Solid construction in a lightweight design
- UV resistant
- Manufactured with SolarGuard®, Stahlin's proprietary formulation of non-halogenated fiberglass, offering superior resistance to outdoor exposure, chemicals and flames.
- Back Panels Available for all sizes

General Information

Color	Gray
Cover Type	Window
Mounting Type	Wall Mount
Material	Fiberglass
Back Panel Screw Size	#10-32 x 3/8
Back Panel Recommended Torque	16-20 in-lbs
Back Panel Screw Material	304 SS
Cover Screw Size	#10-32 x 1-1/4
Cover Screw Recommended Torque	20-24 in-lbs
Cover Screw Material	304 SS
Mounting Foot Screw Size	#10-32 x 7/16
Mounting Foot Screw Recommended Torque	22-25 in-lbs
Installation Mounting Torque	45 in-lbs Max
Metal Inserts	Brass
Hinge Material	304 SS
Latch Material	304 SS
Gasket Material	Poured In Place (PIP) Polyurethane Seamless
Country of Origin	USA

DIMENSIONS

Height (in)	16.0
Width (in)	14.0
Depth (in)	8.0
Height (mm)	406.4
Width (mm)	355.6
Depth (mm)	203.2
Usable Depth (in)	7.5
Usable Depth (mm)	190.0

STANDARDS

NEMA 10250; UL 50; UL 50e; UL508A	cULus Listed File #E64358
CSA Std. C22.2	cULus Listed File #E64358
Type	1; 3; 3S; 4; 4X; 12; 13
IEC 60529; UL Listed #E362920	IP66
UL1741	UL Listed File #E333478
Temperature Range °F	-76°F to +274°F
Temperature Range °C	-60°C to +134°C
Window Temperature Range °F	-26°F to +170°F
Window Temperature Range °C	-32°C to +76°C
Flammability Rating	UL94-5VA
NFPA No. 101 Flame Spread	Class A(1)
Outdoor Exposure UL746c	(f1) Rated
CE	Certified