

Enclosures **PushButton Series**

## Fiberglass Enclosure 6 x 4 x 4 Inches Push Button Series 2 Hole 22 mm Opaque Lift Off Cover



**Catalog Number** CF2PB22

**UPC** 785928200229

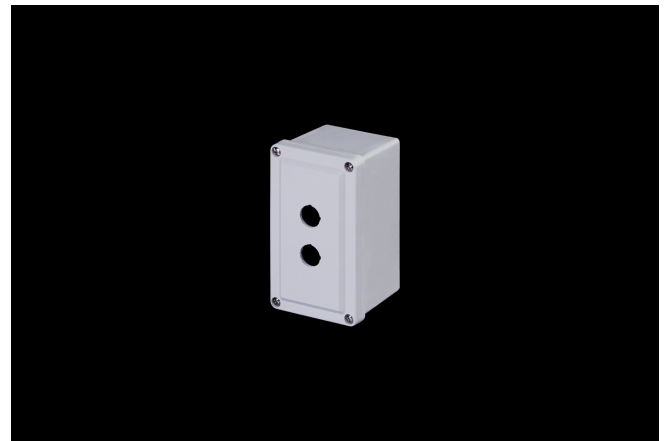
### DESCRIPTION

6H x 4W x 4D Inches Push Button Series Fiberglass Enclosure is an in-line enclosure designed to be a true push button station and houses pushbuttons, switches and pilot lights in 22mm configurations. Designed for general electrical and electronic applications or any application that has associated environmental concerns. Custom hole configurations available upon request.

### APPLICATION

- For use in many MRO and OEM applications
- Slim design allows easy installation of pushbuttons and switches in machine control applications with tight or dense space requirements
- Used in compact or portable control systems or for use as an Operator Interface Enclosure in both indoor and outdoor environments
- Used as general Junction Enclosures or termination point enclosures in an electrical system
- Used indoors or outdoors

### FEATURES



- Memory retaining continuous polyurethane gasket
- Captive stainless steel cover screws
- Chemically resistant fiberglass reinforced polyester
- Submersible; non corrosive; environmental design
- High Impact Resistance
- Manufactured with SolarGuard®, Stahlin's proprietary formulation of non-halogenated fiberglass, offering superior resistance to outdoor exposure, chemicals and flames.

## General Information

|                                |  |
|--------------------------------|--|
| Color                          | Gray   |
| Cover Type                     | Push Button                                    |
| Mounting Type                  | Wall Mount                                     |
| Material                       | Fiberglass                                     |
| Cover Screw Size               | #10-24 x 3/4                                   |
| Cover Screw Recommended Torque | 20-24 in-lbs                                   |
| Cover Screw Material           | 304 SS   |
| Installation Mounting Torque   | 45 in-lbs Max                                  |
| Metal Inserts                  | Brass  |
| Gasket Material                | Poured In Place (PIP)<br>Polyurethane Seamless |
| Country of Origin              | USA  |

## DIMENSIONS

|                   |       |
|-------------------|-------|
| Height (in)       | 6.0   |
| Width (in)        | 4.0   |
| Depth (in)        | 4.0   |
| Height (mm)       | 152.4 |
| Width (mm)        | 101.6 |
| Depth (mm)        | 101.6 |
| Usable Depth (in) | 3.6   |
| Usable Depth (mm) | 92.0  |

## STANDARDS

---

|                                      |                           |
|--------------------------------------|---------------------------|
| NEMA 10250; UL 50; UL 50e;<br>UL508A | cULus Listed File #E64358 |
| CSA Std. C22.2                       | cULus Listed File #E64358 |
| Type                                 | 1; 3R; 4; 4X; 6P; 12      |
| IEC 60529; UL Listed #E362920        | IP66; IP67; IP68          |
| UL1741                               | UL Listed File #E333478   |
| Plenum Space UL2043                  | Compliant                 |
| Temperature Range °F                 | -76°F to +274°F           |
| Temperature Range °C                 | -60°C to +134°C           |
| Flammability Rating                  | UL94-5VA                  |
| NFPA No. 101 Flame Spread            | Class A(1)                |
| Outdoor Exposure UL746c              | (f1) Rated                |
| CE                                   | Certified                 |