

Enclosures **DuraBoxx Series**

Fiberglass Enclosure 10 x 16 x 5 Inches DuraBoxx Series Shallow with Opaque Lift Off Cover



Catalog Number

D10165W

UPC

785928906152

DESCRIPTION

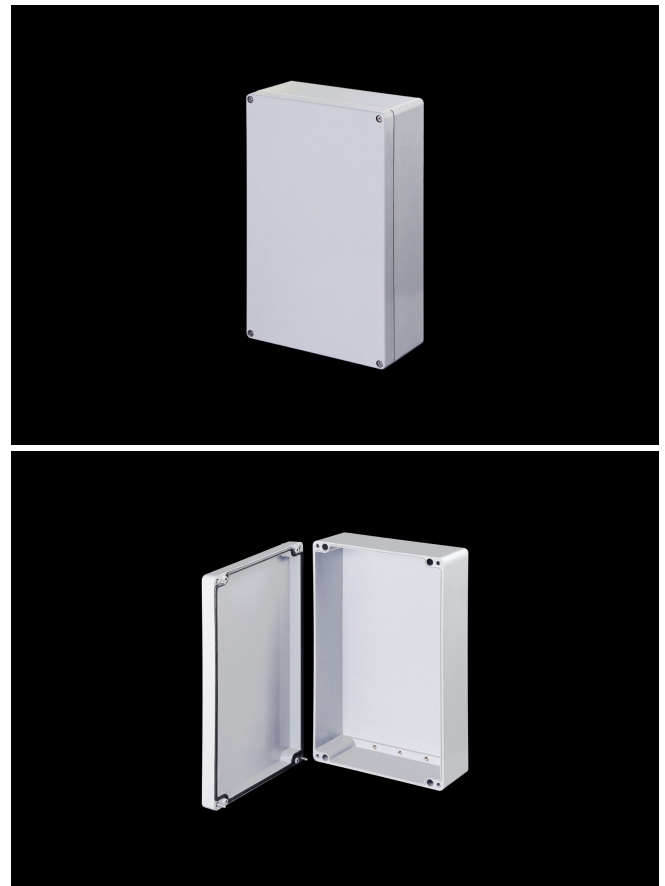
10W x 16W x 5D Inches DuraBoxx Series Shallow Fiberglass Enclosure are suited for indoor or outdoor environments in both commercial and industries environments such as mining, oil, gas, wastewater treatment and petro-chem. Their flush cover design with captive lid screws makes them well suited for high-end electronic applications such as wireless communications and operator interfaces.

APPLICATION

- With its sleek design; shallow depths and flush cover these enclosures are suited for high-end electronic applications
- Used indoors or outdoors
- Used in highly corrosive areas

FEATURES

- Flat opaque cover with captive cover screws



- DIN rail mounting capabilities
- Back Panels Available for all sizes

General Information

Color	Gray
Cover Type	Opaque
Mounting Type	Wall Mount
Material	Fiberglass
Back Panel Screw Size	M6 x 9.5mm
Back Panel Recommended Torque	16-20 in-lbs
Back Panel Screw Material	304 SS
Cover Screw Size	M6-1.0 x 35mm
Cover Screw Recommended Torque	20-24 in-lbs
Cover Screw Material	304 SS
Mounting Foot Screw Recommended Torque	20-24 in-lbs
Installation Mounting Torque	20-24 in-lbs Max
Metal Inserts	Brass
Gasket Material	Poured In Place (PIP) Polyurethane Seamless
Country of Origin	India

DIMENSIONS

Height (in)	10.0
Width (in)	16.0
Depth (in)	5.0
Height (mm)	254.0
Width (mm)	406.4
Depth (mm)	127.0
Usable Depth (in)	4.1
Usable Depth (mm)	104.0

STANDARDS

NEMA 10250; UL 50; UL 50e; cULus Listed File
UL508A #E64358

CSA Std. C22.2 File LR069014

Type 1; 3; 3S; 4; 4X; 6; 6P; 12

IEC 60529; UL Listed IP66; IP67; IP68
#E362920

Temperature Range °F -26°F to +257°F

Temperature Range °C -32°C to +125°C

Flammability Rating UL94-V0

Outdoor Exposure UL746c (f1) Rated

CE Certified