

Enclosures **Starke Series**

Polycarbonate Enclosure Small 10 x 6 x 5 Inches Starke Series with Clear Lift Off Cover



Catalog Number STCC251612W

UPC 785928572067

DESCRIPTION

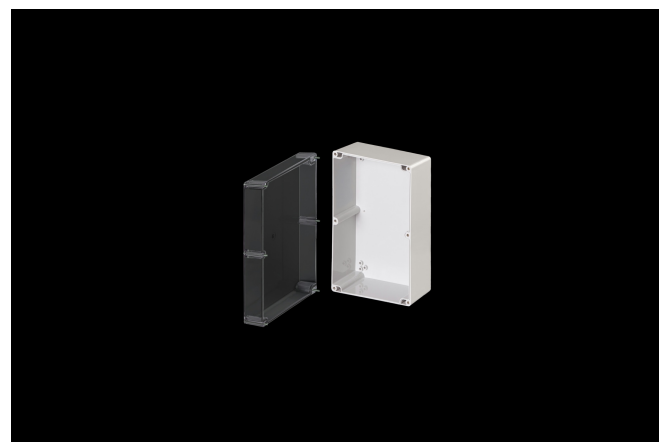
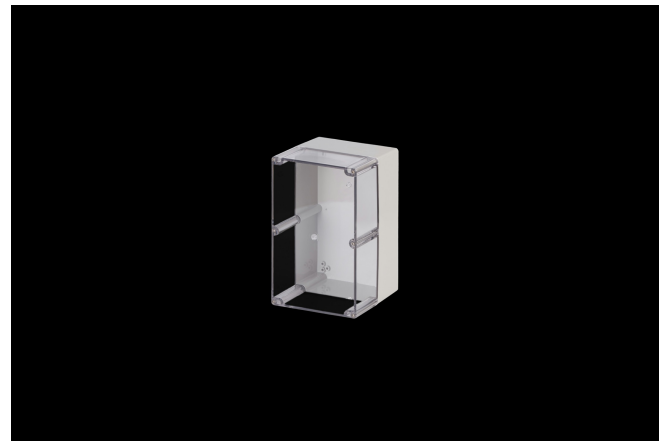
10H x 6W x 5D Inches Starke Series Small Polycarbonate Enclosure with Clear (STCC) Screw Cover (4 Cover Screws, Lift-off Configuration) features flush sides making it ideal for OEM designed product. Raised bosses accommodate back panel mounting and are used for remote sensor mounting and small electronic controls in any environment.

APPLICATION

- Small; simple design ideal for OEMs in the electronics market; circuit boards and wiring applications
- Used for remote sensor mounting and small electronic controls in any environment
- Used indoors or outdoors
- Used in highly corrosive areas

FEATURES

- Clear Cover
- Multiple depths available in most sizes



- Resistant to harsh environments
- Flush sides for that perfect fit
- Multiple molded in bosses for a variety of mounting solutions
- Back Panels Available for all sizes

General Information

Color	Gray
Cover Type	Clear
Mounting Type	Wall Mount
Material	Polycarbonate
Back Panel Screw Size	Plastite 48 #8
Back Panel Recommended Torque	12-16 in-lbs
Back Panel Screw Material	304 SS
Cover Screw Material	304 SS
Installation Mounting Torque	25-30 in-lbs Max
Metal Inserts	Brass
Gasket Material	Poured In Place (PIP) Polyurethane Seamless
Country of Origin	Germany

DIMENSIONS

Height (in)	10.0
Width (in)	6.0
Depth (in)	5.0
Height (mm)	254.0
Width (mm)	152.4
Depth (mm)	127.0
Usable Depth (in)	4.3
Usable Depth (mm)	109.0

STANDARDS

NEMA 10250; UL 50; UL 50e; UL508A	cULus Listed File #E64358
CSA Std. C22.2	cULus Listed File #E64358
Type	1; 3R; 4; 4X; 12
IEC 60529; UL Listed #E362920	IP66
Temperature Range °F	-40°F to +212°F
Temperature Range °C	-40°C to +100°C
Flammability Rating	UL94-V2
Outdoor Exposure UL746c	(f1) Rated
CE	Certified