

Enclosures J Series

Fiberglass Enclosure 10 x 8 x 4 Inches J Series White with Hinged, Latched Opaque Cover



Catalog Number **WH-J1008HPL**

UPC **785928904127**

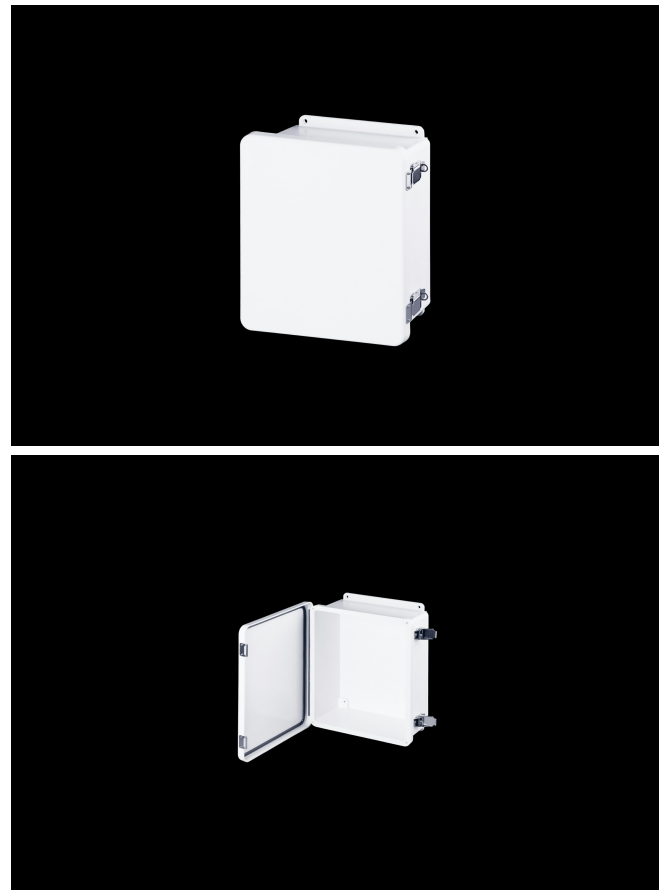
DESCRIPTION

10H x 8W x 4D Inches J Series Fiberglass White Enclosure with an "HPL" Opaque Cover (Hinged, Padlock Latches) is designed for general electrical and electronic applications. Simple in its design, the enclosure can be configured with modifications such as cutouts and windows. Featuring a modest overhand cover on a flange mounted base, they offer unobstructed side-walls, built in mounting capabilities and a protective wrap around cover. J Series Products enhance any instrument installation.

APPLICATION

- Industrial enclosure for harsh; aggressive environments
- Designed for general electrical and electronic applications; and any application that has associated environmental concerns
- Can be configured with cutouts; windows; and modifications that make the finished product truly unique
- Enhance any instrument installation and accommodate standard back-panel mounting

FEATURES



- White Color
- Increased wall thickness vs. competitive models offers structural support and prevents potential water ingress
- Integral mounting flange vs. mounting feet (no assembly required)
- Molded-in inserts provide added pull-out strength
- White Opaque Cover
- Overhang cover on smooth sided base
- High temperature; flame retardant; non-corrosive
- All stainless hardware latches and screws
- Full-length; stainless-steel hinge
- Chemically resistant; fiberglass reinforced polyester
- Non-corrosive; environmental designs
- Stainless steel retention chain on screw covers
- Continuous polyurethane gasket
- Manufactured with SolarGuard®, Stahlin's proprietary formulation of non-halogenated fiberglass, offering superior resistance to outdoor exposure, chemicals and flames.
- Back Panels Available for all sizes

General Information

| | |
|-------------------------------|--|
| Color | White |
| Cover Type | Opaque |
| Mounting Type | Wall Mount |
| Material | Fiberglass |
| Back Panel Screw Size | #10-32 x 3/8 |
| Back Panel Recommended Torque | 16-20 in-lbs |
| Back Panel Screw Material | 304 SS |
| Installation Mounting Torque | 45 in-lbs Max |
| Metal Inserts | Brass |
| Hinge Material | 304 SS |
| Latch Material | 304 SS |
| Gasket Material | Poured In Place (PIP) Polyurethane Seamless |
| Country of Origin | USA |

DIMENSIONS

| | |
|-------------------|-------|
| Height (in) | 11.6 |
| Width (in) | 9.4 |
| Depth (in) | 4.2 |
| Height (mm) | 295.4 |
| Width (mm) | 239.0 |
| Depth (mm) | 107.2 |
| Usable Depth (in) | 3.4 |
| Usable Depth (mm) | 87.0 |

STANDARDS

| | |
|-----------------------------------|---------------------------|
| NEMA 10250; UL 50; UL 50e; UL508A | cULus Listed File #E64358 |
| CSA Std. C22.2 | cULus Listed File #E64358 |
| Type | 1; 3R; 4; 4X; 6P; 12 |
| IEC 60529; UL Listed #E362920 | IP66 |
| UL1741 | UL Listed File #E333478 |
| Plenum Space UL2043 | Compliant |
| Temperature Range °F | -76°F to +274°F |
| Temperature Range °C | -60°C to +134°C |
| Flammability Rating | UL94-5VA |
| NFPA No. 101 Flame Spread | Class A(1) |
| Outdoor Exposure UL746c | (f1) Rated |
| CE | Certified |