

Enclosures J Series

Fiberglass Enclosure 30 x 24 x 10 Inches J Series with Hinged, Latched Opaque Cover



Catalog Number J3024HPL

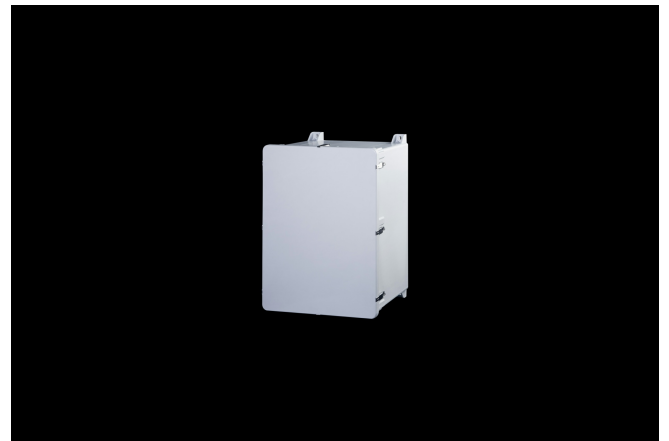
UPC 785928566127

DESCRIPTION

30H x 24W x 10D Inches J Series Fiberglass Enclosure with an "HPL" Opaque Cover (Hinged, Padlock Latches) is designed for general electrical and electronic applications. Simple in its design, the enclosure can be configured with modifications such as cutouts and windows. Featuring a modest overhand cover on a flange mounted base, they offer unobstructed side-walls, built in mounting capabilities and a protective wrap around cover. J Series Products enhance any instrument installation.

APPLICATION

- Renewable Energy Applications
- Industrial enclosure for harsh; aggressive environments
- Designed for general electrical and electronic applications; and any application that has associated environmental concerns
- Can be configured with cutouts and modifications that make the finished product truly unique
- Enhance any instrument installation and accommodate standard back-panel mounting



FEATURES

- Overhang cover on smooth sided base
- High temperature; flame retardant; non corrosive; environmental designs
- All stainless hardware latches and screws
- Full length stainless steel hinge
- Chemically resistant fiberglass reinforced polyester
- Non corrosive; environmental design
- Continuous polyurethane gasket
- Manufactured with SolarGuard®, Stahlin's proprietary formulation of non-halogenated fiberglass, offering superior resistance to outdoor exposure, chemicals and flames.
- Back Panels Available for all sizes

General Information

Color	Gray
Cover Type	Opaque
Mounting Type	Wall Mount
Material	Fiberglass
Back Panel Screw Size	3/8-16 x 1/2
Back Panel Recommended Torque	28-32 in-lbs
Back Panel Screw Material	304 SS
Installation Mounting Torque	80 in-lbs Max
Metal Inserts	Brass
Hinge Material	304 SS
Latch Material	304 SS
Gasket Material	Poured In Place (PIP) Polyurethane Seamless
Country of Origin	USA

DIMENSIONS

Height (in)	30.0
Width (in)	24.0
Depth (in)	10.0
Height (mm)	762.0
Width (mm)	609.6
Depth (mm)	254.0
Usable Depth (in)	11.1
Usable Depth (mm)	280.9

STANDARDS

NEMA 10250; UL 50; UL 50e; UL508A	cULus Listed File #E64358
CSA Std. C22.2	cULus Listed File #E64358
Type	1; 3; 3R; 4; 4X; 12; 13
IEC 60529; UL Listed #E362920	IP66
UL1741	UL Listed File #E333478
Plenum Space UL2043	Compliant
Temperature Range °F	-76°F to +274°F
Temperature Range °C	-60°C to +134°C
IEC 62262 Impact Rating Listed	IK10 per File #E362920
Flammability Rating	UL94-5VA
NFPA No. 101 Flame Spread	Class A(1)
Outdoor Exposure UL746c	(f1) Rated
CE	Certified